

## Recombinant NPC2 Monoclonal Antibody

catalog number: AN300054P

**Note:** Centrifuge before opening to ensure complete recovery of vial contents.

### Description

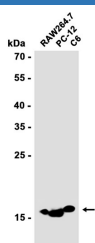
<b>Reactivity</b>	Human;Mouse;Rat
<b>Immunogen</b>	Recombinant Human NPC2 Protein
<b>Host</b>	Rabbit
<b>Isotype</b>	IgG
<b>Clone</b>	A1164
<b>Purification</b>	Protein A
<b>Buffer</b>	0.2 µm filtered solution in PBS

### Applications

### Recommended Dilution

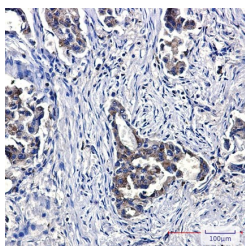
**WB:** 1:1000; IHC-P: 1:1000-1:5000; ICC/IF: 1:500-1:1000; FC: 1:50-1:100

### Data

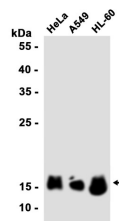


Western blot analysis of extracts from RAW264.7, PC-12, C6 cells at 1:1000.

**Observed-MW:17 kDa**  
**Calculated-MW:17 kDa**

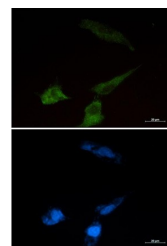


Immunohistochemical analysis of paraffin-embedded human lung cancer .



Western blot analysis of extracts from HeLa, A549, HL-60 cells at 1:1000.

**Observed-MW:17 kDa**  
**Calculated-MW:17 kDa**



Immunofluorescent analysis of U87-MG cells (green), and DAPI (blue).

### Preparation & Storage

<b>Storage</b>	Store at -20°C Valid for 12 months. Avoid freeze / thaw cycles.
<b>Shipping</b>	Ice bag

### Background

This gene encodes a protein containing a lipid recognition domain. The encoded protein may function in regulating the transport of cholesterol through the late endosomal/lysosomal system. Mutations in this gene have been associated with Niemann-Pick disease, type C2 and frontal lobe atrophy. [provided by RefSeq, Jul 2008]

### For Research Use Only

Toll-free: 1-888-852-8623  
Web: [www.elabscience.com](http://www.elabscience.com)

Tel: 1-832-243-6086  
Email: [techsupport@elabscience.com](mailto:techsupport@elabscience.com)

Fax: 1-832-243-6017

Rev. V1.4